

# THE SÜDMO VALVE RANGE

## **SVP BASIC**

## **SINGLE SEAT VALVES**

### **CHALLENGE**

Integrating single seat valves into a hygienic production process presents two main challenges. One is the need to control the cost of this particular valve type. Additionally, projects are often pressed for time with project cycles become shorter. The market is in search of valves that are cost-effective, can quickly be put into operation, and have the basic functions.

Also key is easy handling throughout the whole process including: ordering, delivery, integration of housings and functional modules, connection to plant controls, and maintenance.

### **SOLUTION**

Pentair Südmö developed the SVP Basic Single Seat Valve range as a perfect solution for these market requirements. The SVP Basic range offers cost efficiency, flexibility, and meets the latest hygienic standards for the food, beverage and dairy industries. This is achieved through standardization and a clear range of options.



### **CUSTOMER BENEFITS**

- **Attractive price level**
- **Sophisticated packaging solution**
- **Compact and light weight design**

# THE SÜDMO VALVE RANGE

## SVP BASIC

### SINGLE SEAT VALVES

#### PROCESS APPLICATIONS

- Plant areas prior to pasteurization
- Hot filling
- CIP areas

#### TECHNICAL SPECIFICATIONS

##### Sizes

DN 040-100 / OD 1.5" - 4.0"

##### Product wetted area material

1.4404 (AISI 316L)

##### Operating pressure

6 bar (87 psi)

##### Control air pressure

6-8 bar (87-116 psi)

##### Product wetted surfaces

Ra ≤ 0.8 µm

##### Product wetted seals

EPDM (FDA/EG1935)

Optional FKM (FDA/EG1935)

##### Applied design standards

3-A / EHEDG

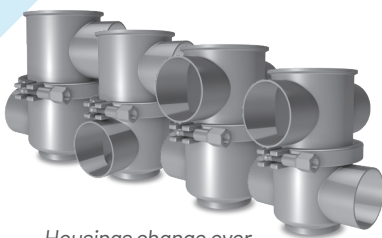
#### PRODUCT APPLICATIONS

##### Beverages

- Beer
- Spirits
- Wine
- Soft drinks
- Ice tea
- Fruit juices
- Water

##### Dairy & Food

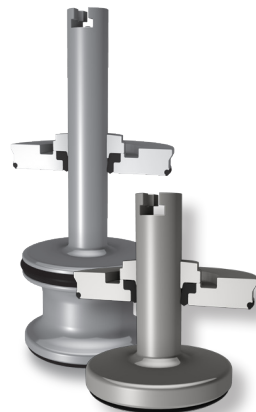
- Cheese
- Yogurt
- Milk
- Whey products
- Soup
- Vegetable puree
- Pet food



Housings change over



Housings right angle and double right angle



Inserts



Actuator

normally closed NC - normally open NO



Proximity switches

SensoTop

IntelliTop 2.0



PENTAIR SÜDMO GMBH

INDUSTRIESTRASSE 7, 73469 RIESBÜRG, GERMANY INFO.SUEDMO@PENTAIR.COM WWW.FOODANDBEVERAGE.PENTAIR.COM

All Pentair trademarks and logos are owned by Pentair. All other brand or product names are trademarks or registered marks of their respective owners. Because we are continuously improving our products and services, Pentair reserves the right to change specifications without prior notice.

Pentair is an equal opportunity employer.

svp\_basic\_2020\_en © 2020 All Rights Reserved.